



TSX-V:TRS

BRAZIL DIAMOND EXPLORATION PROJECTS



Tres-Or's 100%-owned Brazilian company Vaaldiam do Brasil Mineração Ltda. ("VBM") diamond projects in Mato Grosso and Minas Gerais States, Brazil.



About Us:

Tres-Or purchased a 100% interest in a private Brazil company Vaaldiam do Brasil Mineração Ltda. (“VBM”).

VBM is Tres-Or’s Brazilian operations company focused on the exploration, acquisition, discovery and development of natural diamond projects. Our primary focus is the discovery of gemological diamonds in primary sources that occur in kimberlitic and lamproitic rocks within the Brazilian states of Minas Gerais and Mato Grosso.

Tres-Or’s acquisition of VBM, provides us with access to a specialized team with more than 20 years experience in the exploration, evaluation and development of diamond targets from primary sources in Brazil. Our exploration team were responsible for finding seven new kimberlites in the Brauna Kimberlite Field in the northeast Bahia state, which later resulted in the development of the first primary source diamond mine in Latin America, the Brauna Mine.

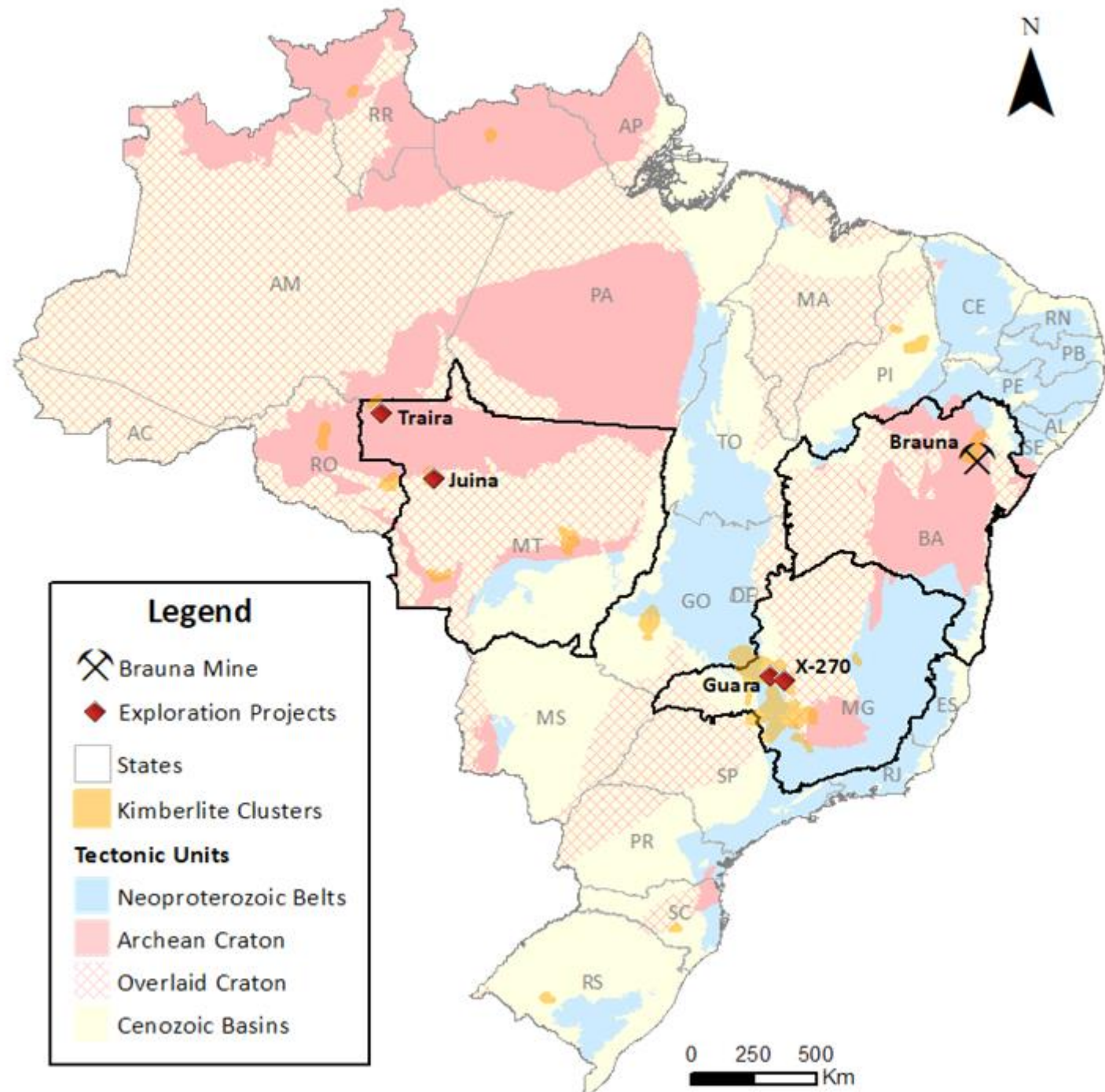
Tres-Or is a Canadian diamond exploration company with diamond discoveries in Ontario and Quebec, Canada and exploration permits for primary diamond sources in Brazil through its wholly owned subsidiary VBM.

Tres-Or is listed on the TSX Venture Exchange under the trading symbol “TRS”. Additional information is available on our website www.tres-or.com .

❖ Tres-Or's Brazil company, "VBM" holds 4 Exploration Permits, issued by the Brazilian Mining Agency - ANM (from the acronym in Portuguese: Agência Nacional de Mineração). These Exploration Permits comprise exploration projects, in 2 different States in Brazil;

❖ Location of Exploration Projects:

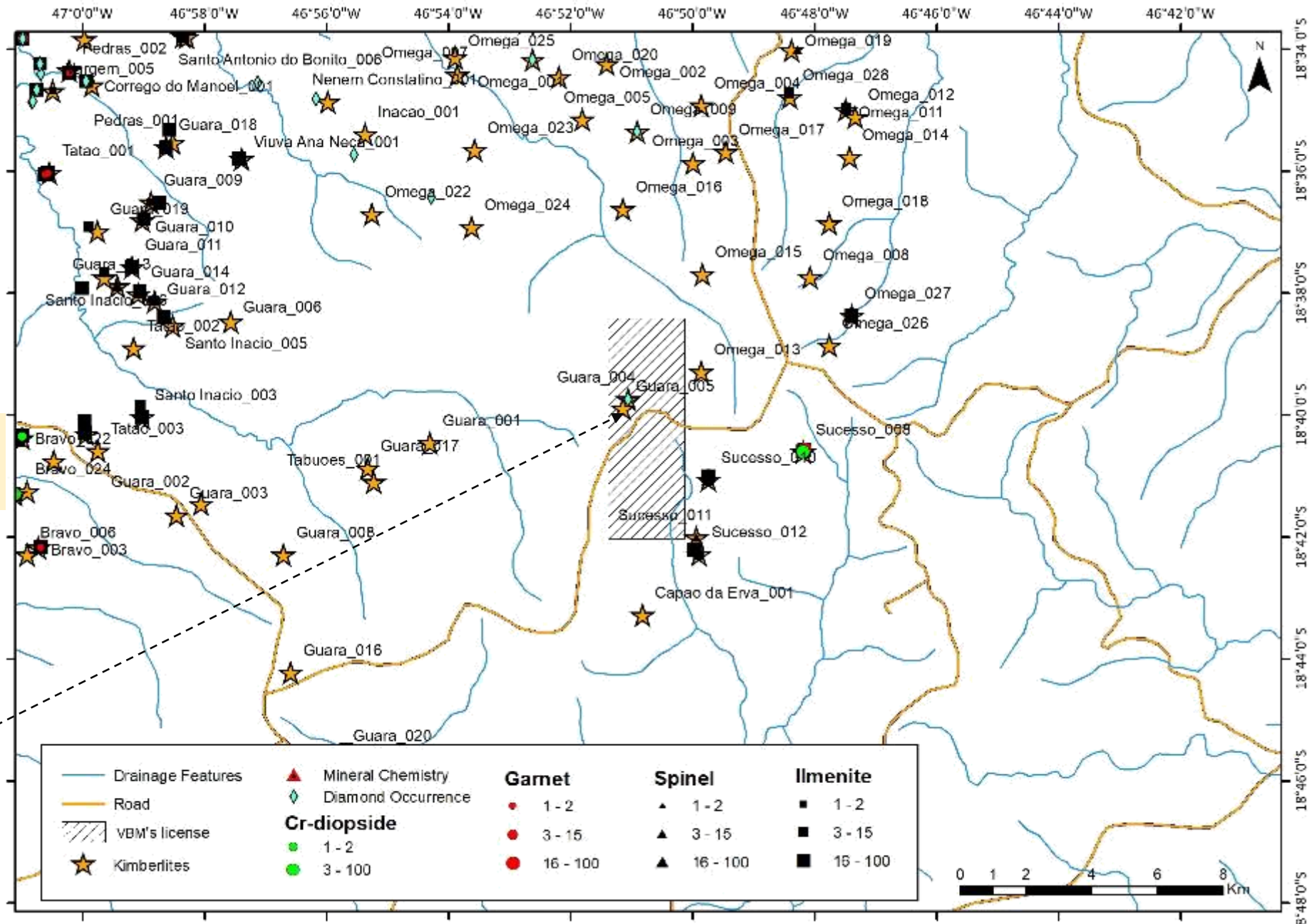
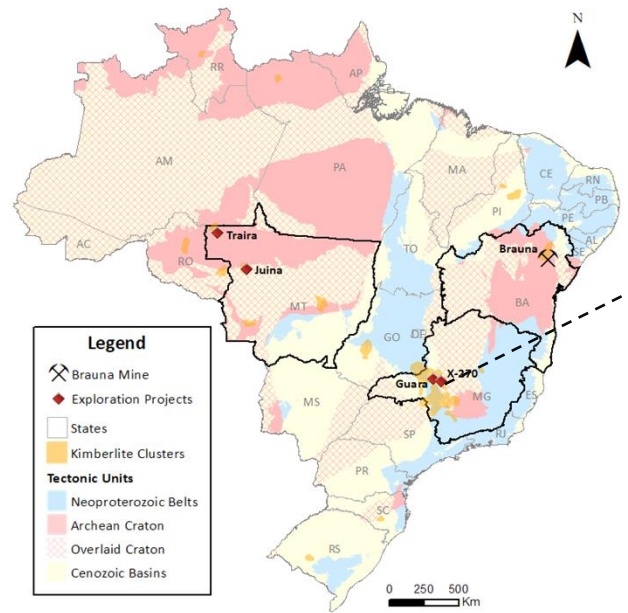
- ❖ **Guara** (Minas Gerais);
- ❖ **X-270** (Minas Gerais);
- ❖ **Traira** (Mato Grosso);
- ❖ **Juina** (Mato Grosso)



TSX-V:TRS

Guara Project (Minas Gerais)

1 exploration permit:
831.215/2021



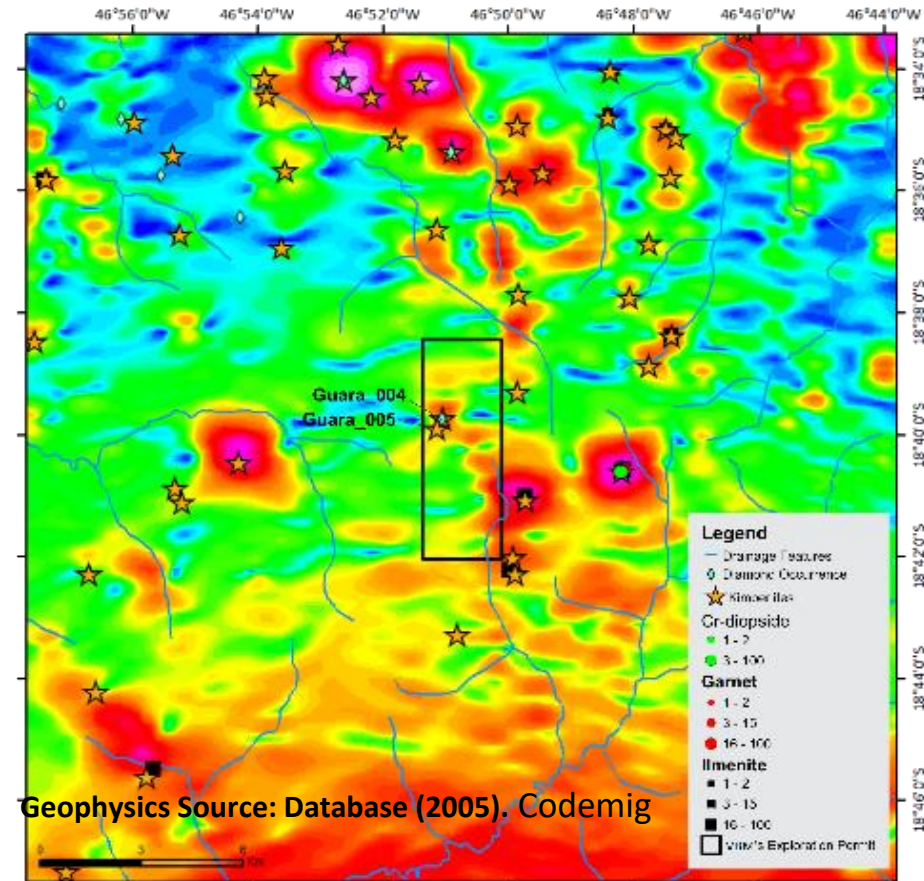
Guara Project

HIGHLIGHTS

- The permit covers two important kimberlite pipes, Guara 004 and Guara 005 which occur in one of the biggest igneous provinces in the Brazilian Shield – the Alto Paranaíba Igneous Province (APIP), related to the Coromandel-Três Ranchos Kimberlite Field, which is considered a hot spot for kimberlite exploration.
- Guará-004** is pipe structure covering approximately 9 ha. Initial studies by De Beers reported the recovery of one microdiamond from a 160kg sample;
- Guará-005**: is a pipe structure covering approximately 3 ha. and contains KIM Cr-spinel

EXPLORATION PRIORITY

- The permit hosts a proven diamond-bearing kimberlite pipe (Guará 004) covering approximately (12ha) representing a priority exploration target;
- Airborne geophysics (analytic signal) identify the Guará 004 and 005 pipes; and there are at least four other anomalies that require further exploration;
- The “Projeto Diamante Brasil” by CPRM classified the Guara 004 Kimberlite as one of the most promising kimberlites in terms of size and diamond content: “Among the hundreds of kimberlite intrusions that make up Coromandel-Três Ranchos Kimberlite Field, there are at least 18 of them recognized as bearing diamonds (Alpha-4, Alpha-9, Delta-18, Douradinho-11, **Guará-004**, Japecanga-6, Limpeza-3, Limpeza-5, Limpeza-19, Omega-1, Omega-9, Romaria-1, Santa Clara-1, Três Ranchos-4, Três Ranchos-101, Três Ranchos-102, Três Ranchos-104 and Vargem-3). In terms of surface area, the mineralized intrusions having the largest dimensions are, respectively: Limpeza-19 (49 ha), Romaria-1 (44 ha), Omega-1 (25 ha), **Guará-004 (9 ha)**, Alpha-9 and Delta-18 (both 8 ha each), and Alpha-4 and Santa Clara-1”.



Exploration Permits

❖ Vaaldiam do Brasil Mineração Ltda. (“VBM”) holds the 4 Exploration Permits listed below.

OWNER	PROJECT	CLAIM #	AREA (ha)	STATE	STATUS	EXPLORATION PERMIT #	ISSUANCE DATE	EXP. REPORT DEADLINE
VBM	Guará	831.215/2021	1.465,37	Minas Gerais	Exploration permit	8733/21	04/11/2021	20/10/2024
VBM	X-270	831.218/2021	1.650,04	Minas Gerais	Exploration permit	8270/21	20/10/2021	10/10/2024
VBM	Traíra	866.769/2021	9.989,63	Mato Grosso	Exploration permit	9037/21	11/11/2021	25/10/2024
VBM	Juína	866.785/2021	6.652,84	Mato Grosso	Exploration permit	540/22	26/01/2022	15/01/2025

❖ Exploration Permits Limits (Coordinate System – SIRGAS 2000):

831.215/2021		
Vert.	Latitude	Longitude
1	-18°38'25"130	-46°51'22"590
2	-18°38'25"130	-46°50'07"450
3	-18°42'01"570	-46°50'07"450
4	-18°42'01"570	-46°51'22"590
5	-18°38'25"130	-46°51'22"590

831.218/2021														
Vert.	Latitude	Longitude	Vert.	Latitude	Longitude	Vert.	Latitude	Longitude	Vert.	Latitude	Longitude	Vert.	Latitude	Longitude
1	-18°49'55"822	-46°19'36"240	11	-18°51'13"721	-46°21'55"428	21	-18°51'17"769	-46°21'47"477	31	-18°51'14"833	-46°21'50"329	41	-18°51'06"926	-46°21'57"948
2	-18°52'06"050	-46°19'36"240	12	-18°51'14"710	-46°21'55"428	22	-18°51'18"033	-46°21'47"477	32	-18°51'13"947	-46°21'50"329	42	-18°51'10"318	-46°21'57"948
3	-18°52'06"050	-46°21'23"100	13	-18°51'14"710	-46°21'53"423	23	-18°51'18"033	-46°21'46"420	33	-18°51'13"947	-46°21'52"394	43	-18°51'10"318	-46°22'13"570
4	-18°51'24"000	-46°21'23"100	14	-18°51'15"431	-46°21'53"423	24	-18°51'18"610	-46°21'46"420	34	-18°51'12"670	-46°21'52"394	44	-18°49'55"801	-46°22'13"570
5	-18°51'24"000	-46°22'13"500	15	-18°51'15"431	-46°21'51"858	25	-18°51'18"610	-46°21'45"046	35	-18°51'12"670	-46°21'53"387	45	-18°49'55"822	-46°19'36"240
6	-18°52'06"050	-46°22'13"500	16	-18°51'16"260	-46°21'51"858	26	-18°51'16"627	-46°21'45"046	36	-18°51'11"605	-46°21'53"387			
7	-18°52'06"050	-46°22'13"570	17	-18°51'16"260	-46°21'50"361	27	-18°51'16"627	-46°21'47"832	37	-18°51'11"605	-46°21'54"544			
8	-18°51'10"328	-46°22'13"570	18	-18°51'16"804	-46°21'50"361	28	-18°51'15"767	-46°21'47"832	38	-18°51'10"410	-46°21'54"544			
9	-18°51'10"328	-46°21'57"948	19	-18°51'16"804	-46°21'49"207	29	-18°51'15"767	-46°21'48"832	39	-18°51'10"410	-46°21'56"214			
10	-18°51'13"720	-46°21'57"948	20	-18°51'17"769	-46°21'49"207	30	-18°51'14"833	-46°21'48"832	40	-18°51'06"926	-46°21'56"214			

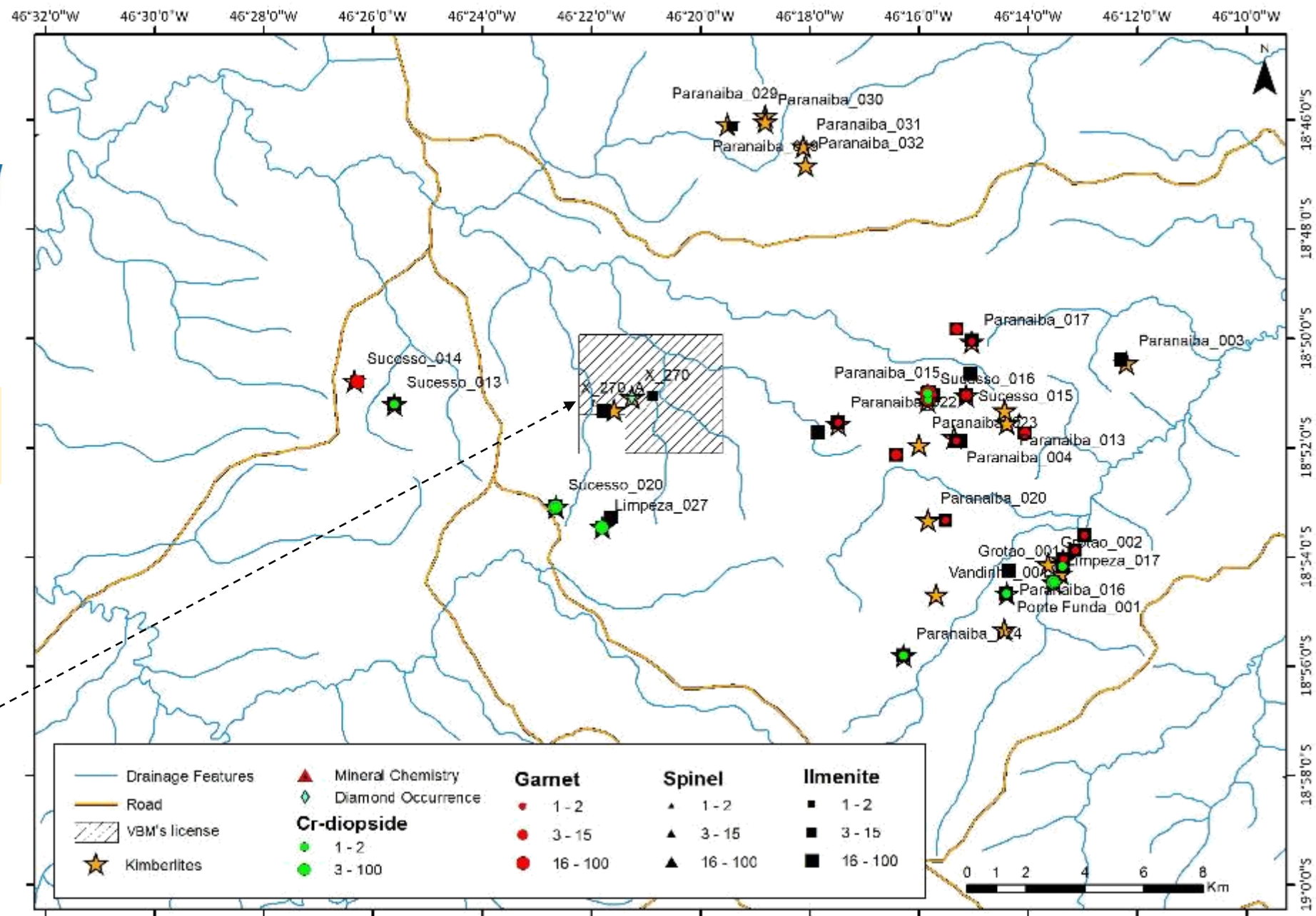
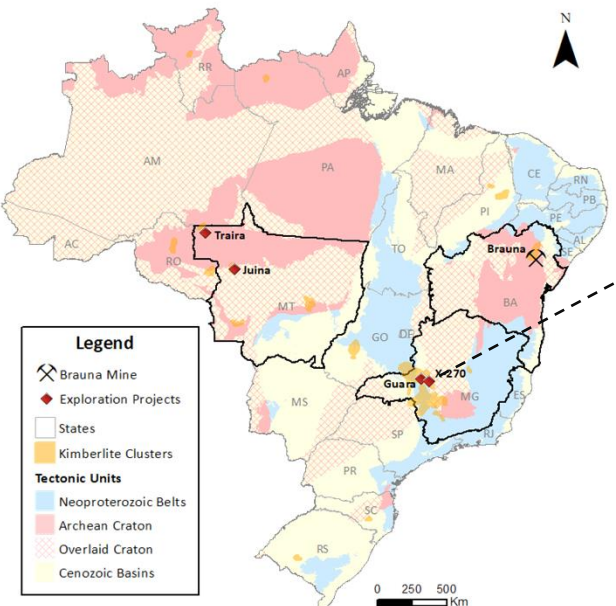
866.785/2021		
Vert.	Latitude	Longitude
1	-11°38'51"311	-58°53'58"172
2	-11°38'51"311	-58°57'08"672
3	-11°32'41"495	-58°57'08"671
4	-11°32'41"495	-58°55'05"653
5	-11°32'27"528	-58°55'05"652
6	-11°32'27"528	-58°54'28"195
7	-11°32'25"051	-58°54'28"195
8	-11°32'25"051	-58°54'27"001
9	-11°32'25"051	-58°53'58"171
10	-11°38'51"311	-58°53'58"172

866.769/2021		
Vert.	Latitude	Longitude
1	-09°12'04"702	-60°50'20"836
2	-09°12'04"703	-60°45'01"347
3	-09°17'38"132	-60°45'01"347
4	-09°17'38"132	-60°50'20"836
5	-09°12'04"702	-60°50'20"836

TSX-V:TRS

X-270 Project (Minas Gerais)

1 exploration permit:
831.218/2021



X-270 Project

❖ HIGHLIGHTS

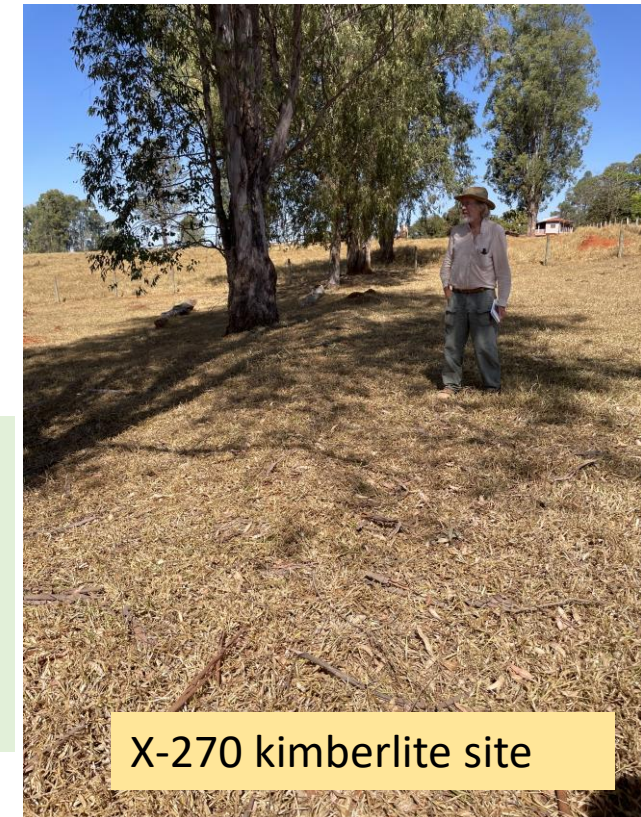
- The licence covers two important kimberlite occurrences, X-270 and X-270-A. The kimberlites form part of the São Gotardo Kimberlite Field and are intruded into one of the biggest igneous provinces in the Brazilian Shield – the Alto Paranaíba Igneous Province (APIP), which is considered a hot spot for kimberlite exploration.
- **X-270** is a Group I kimberlite approximately 10 hectares in size, 89.5 Ma of age (U-Pb perovskite). It was tested by a short diamond drill hole that intersected crater facies xenolith-rich kimberlite tuff. A 0.1 carat macro-diamond was recovered from an 80 kilogram sample of the drill core. The diamond is a fragment of a larger stone and is clear and free of inclusions.
- Pipe X-270 lies within a cluster of 12 additional targets in an area where diamond indicator minerals and diamonds have been recovered in drainage and soil samples (Canabrava Annual Report, 1997).
- KIM's present: Mg-ilmenite, Garnets and Cr-spinel are cited as abundant in the intrusion. 14 ilmenites were obtained from alluvial sample 600m east of the body.
- **X-270-A**: No information about the structure of the intrusion.

❖ EXPLORATION PRIORITY

- The property hosts a proven diamond-bearing kimberlite (X-270) covering an approximate surface area (10 ha.) and associated bodies such as the X-270-A, and is considered a priority exploration target by Tres-Or's team (initial site visit in August 2023);
- Described as Crater Facies kimberlite indicates large volumes considering that the pipe is composed by crater, diatreme and root zones;
- A diamond fragment from a larger stone reported from drill testing was recovered, indicating potential for more stones and perhaps high commercial value.



Processing Plant at Patos de Minas laboratory
(Canabrava Annual Report, 1997)

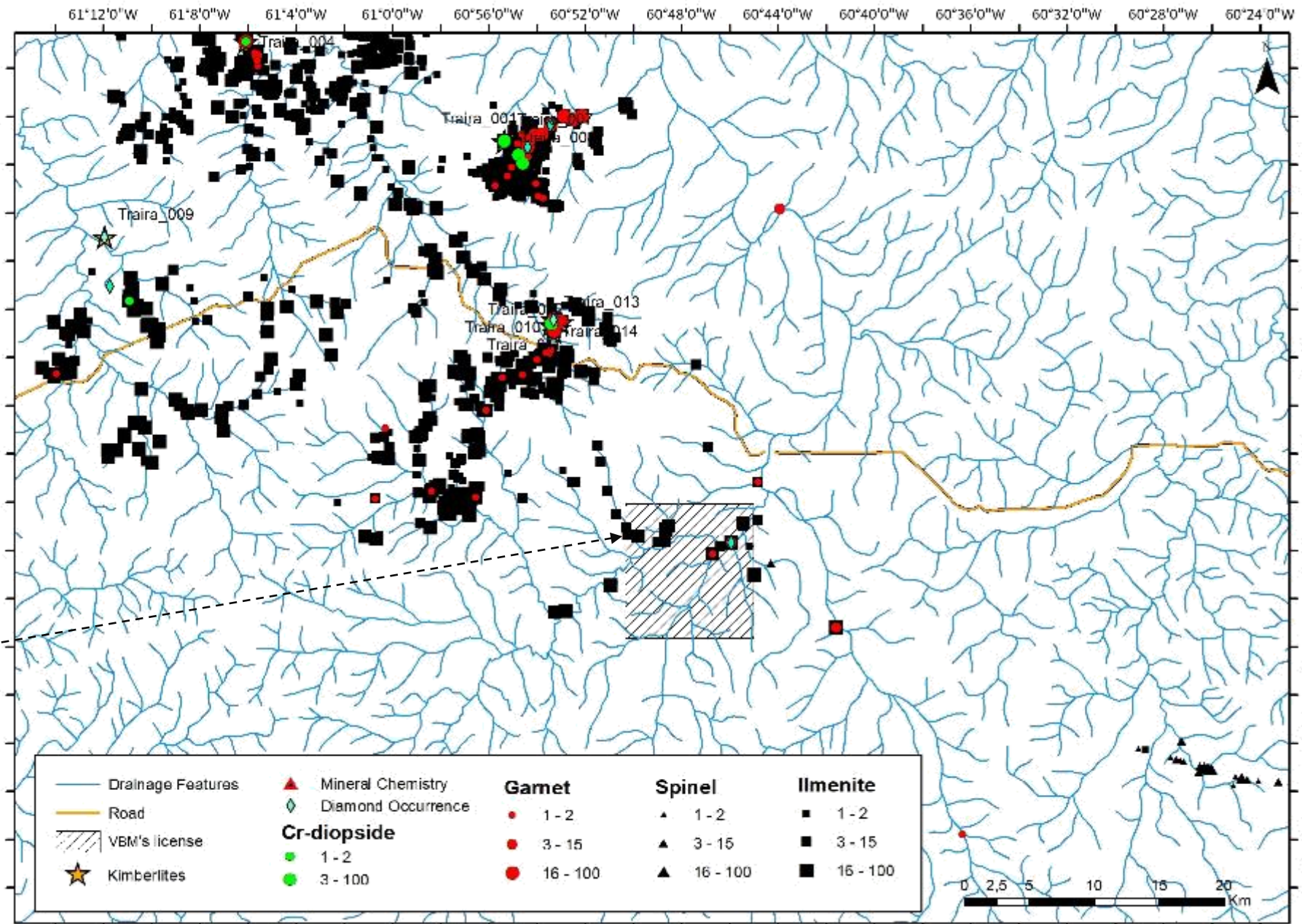
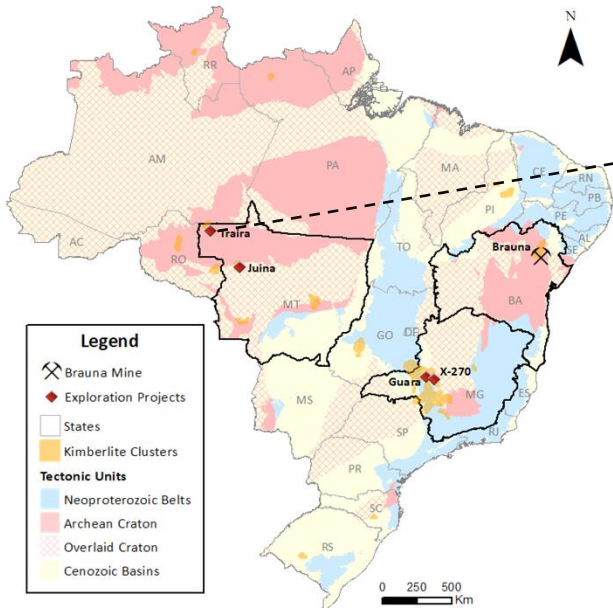


X-270 kimberlite site

TSX-V:TRS

Traira Project (Mato Grosso)

1 exploration permit:
866.769/2021



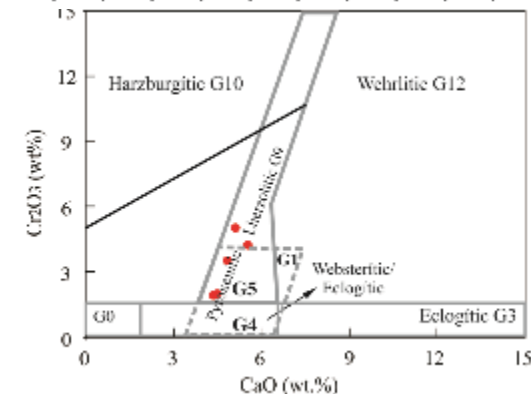
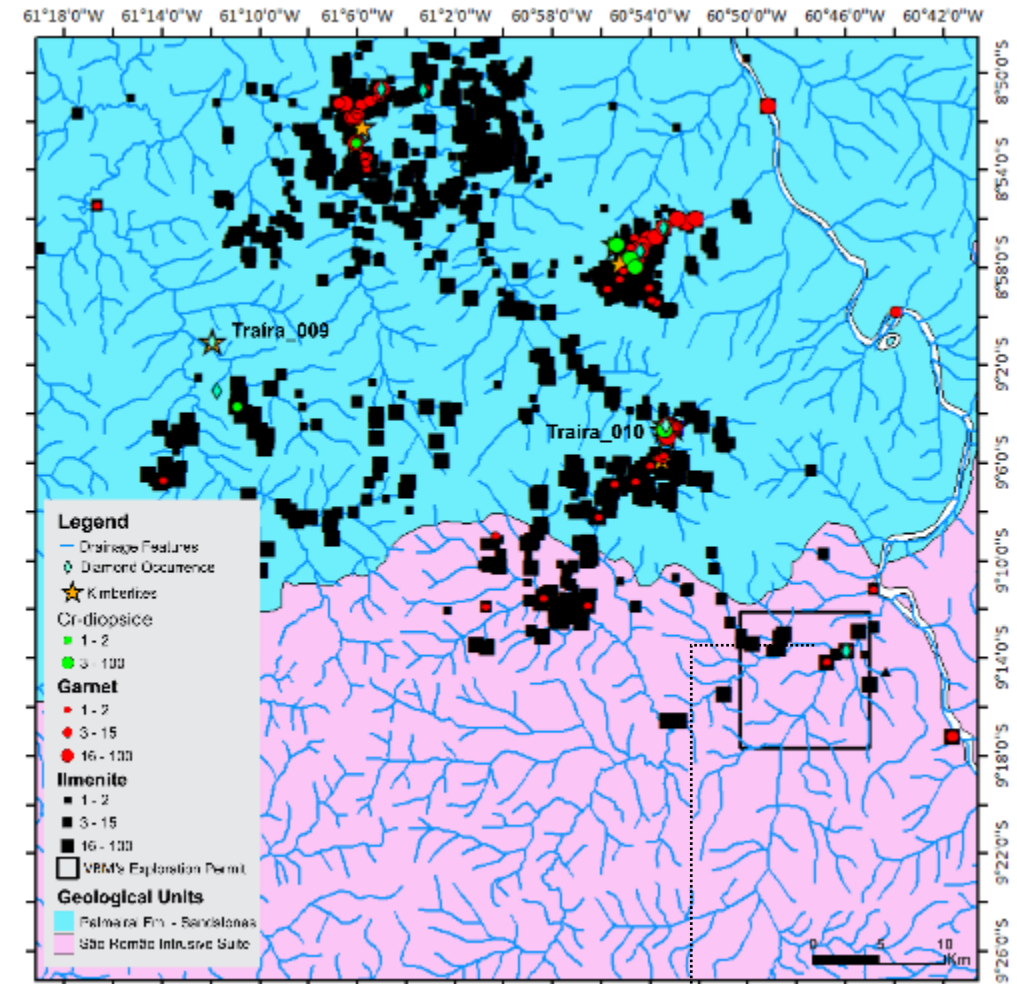
Traira Project

HIGHLIGHTS

- The permit is strategically located 20km from the southeastern portion of the On-Craton Traira Kimberlite Field, which is well known to contain diamond bearing kimberlites (“De Beers recovered 16,808 diamonds (5,151.20 ct) from 1330 m³ of material from Traira-09 and Traira-10 – from “Projeto Diamante Brasil, CPRM 2017”).
- In the permit area there is an occurrence of one diamond found in the drainage containing 0.032cts coupled with KIM indicator minerals spread out in the northern portion of the permit area (KIM: Garnet (9), Ilmenite (601), Spinel (45)).

EXPLORATION PRIORITY

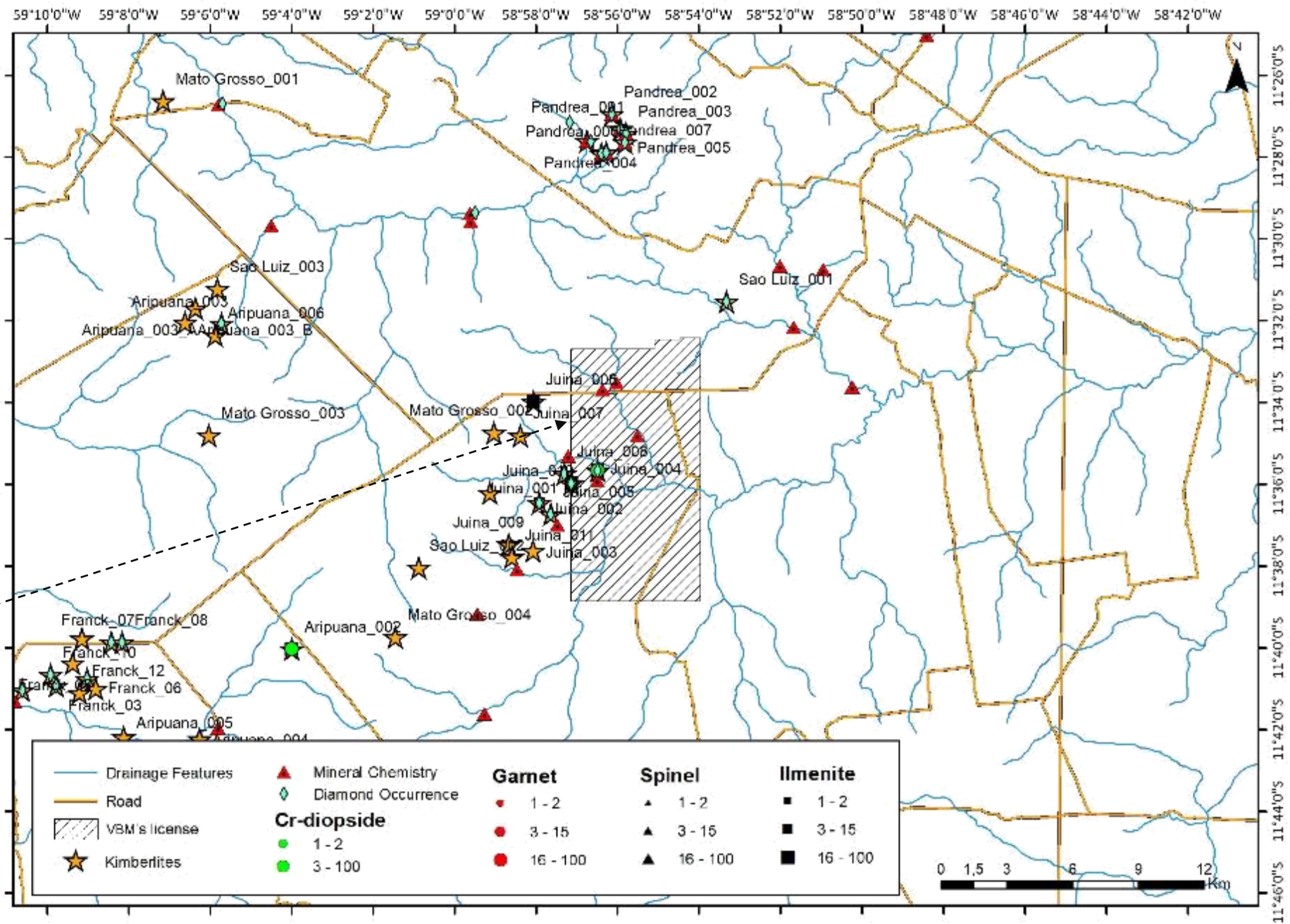
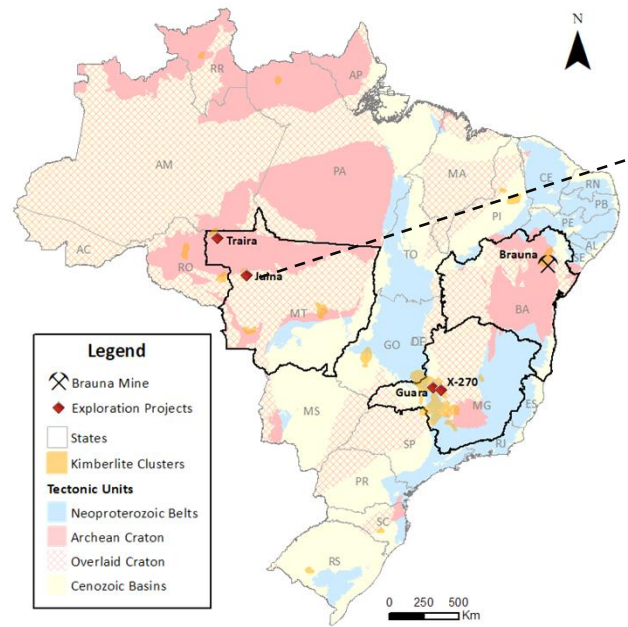
- The exploration permit hosts a diamond occurrence (0.032 cts) in drainage, but located in a different drainage system of diamondiferous Traira kimberlites (Traira 010, Traira 009). Exploration potential exists for a new kimberlite occurrence, as a source for the KIM indicator minerals recovered.
- The presence of spinel can indicate some proximity to the source of the recovered KIM’s.
- Although the area is located in a different geological unit from the Traira kimberlites, both areas are positioned over Proterozoic units. Since the Traira kimberlites were classified as On-Craton, by geophysical interpretation, the Amazonian Craton must be located under these supracrustal rocks. Further work is warranted.



TSX-V:TRS

Juina Project (Mato Grosso)

1 exploration permit:
866.785/2021



Juina Project

HIGHLIGHTS

The permit covers two important diamond bearing kimberlite occurrences, Juina 001 and Juina 004. The kimberlites are included in one of the most famous and historic diamond producing areas in Brazil (Juina district; Juina Kimberlite Field), well known to be a hot spot for primary diamond source exploration.

Juina 001 is an unknown shaped Diamond-bearing kimberlite (crater facies), where two diamonds were recovered (totaling 0.04 ct) obtained from 258 m³ of kimberlite, coupled with KIM indicator minerals: Ilmenite (65), Cr-diopside (2).

Juina 004 is a Diamond-bearing kimberlite pipe (crater facies) covering approximately 40 ha. The “Projeto Diamante Brasil, 2017 – CPRM” reported a diamond occurrence on the top of the Juina 004 (unknown size).

The north central section of the permit area also contains untested geophysical anomalies and KIM’s: Garnet (100), Ilmenite (100), Cr-diopside (100), including high-Cr and high-Mg garnets (2).

EXPLORATION PRIORITY

- The exploration permit hosts two diamond bearing kimberlites Juina 001 and Juina 004, with their surface area which combined surpass 40 ha.
- There are positive kimberlite indicator minerals that need to be investigated in the northern section of the permit.
- Airborne geophysics indicates a high magnetic field (analytic signal) in the northern sector of the permit for exploration of potential new kimberlite bodies.
- The 2 kimberlite bodies are both crater facies indicating large volumes of materials if they have the classic structure of kimberlitic pipes containing diatremes and deep roots.

